



General Certificate of Secondary Education  
January 2020

Centre Number

--	--	--	--	--

Candidate Number

--	--	--	--	--

# English Language

Unit 1

Writing for Purpose and  
Audience and Reading to  
Access Non-fiction and Media  
Texts



[GEN11]

\*GEN11\*

**TUESDAY 14 JANUARY, MORNING**

## TIME

1 hour 45 minutes.

## INSTRUCTIONS TO CANDIDATES

Write your Centre Number and Candidate Number in the spaces provided at the top of this page.

**You must complete the tasks in the spaces provided. If needed, you can ask for more sheets to finish your responses.**

**Do not write outside the boxed area on each page or on blank pages.**

Complete in **black ink only**. Do not write with a gel pen.

Complete **all** the tasks: the **one task** in **Section A** and the **four tasks** in **Section B**.

## INFORMATION FOR CANDIDATES

The total mark for this paper is 150.

**Section A** (Writing) **One task** marked out of **87 marks**. Spend **55 minutes** on this section.

**Section B** (Reading) **Four tasks** marked out of **63 marks**. Spend **50 minutes** on this section.

Pay attention to the suggested timings shown at the beginning of each task; these will enable you to complete all the tasks within the time limit.

Figures in brackets printed at the end of each task indicate the marks available.

Examiners can only credit what they can read. Keep your work legible.

12529



\*16GEN1101\*

## Section A: Writing for Purpose and Audience

**Task 1: Spend 55 minutes on your response. Mark allocation: 87 marks**

Up to **57 marks** are available for an **organised and engaging** piece of writing that **matches form and purpose with audience**.

Up to **30 marks** are available for the use of a **range of sentence structures** and **accuracy in spelling, punctuation and grammar**.

Write an article for your school magazine persuading the readers to agree with **your views** on the following statement:

**“As students we all worry too much about what other people think of us!”**

You are advised to spend:

- **15 minutes** thinking and planning your response
- **30 minutes** writing the article
- **10 minutes** checking your writing

**Planning space:**









## Section B: Reading Non-Fiction and Media Texts

Four tasks: 50 minutes. Mark allocation: 63 marks

### Reading Non-fiction

Tasks 2 and 3 are based on extracts from an online article about how we can be affected by our surroundings.

**Task 2:** Spend **15 minutes** on this task. Total **21 marks**.

**Read the text below where the writer describes what he enjoys about photography. Explain how he has presented this in a way that engages his readers' interest.**

Essex has an ancient history of Roman invaders and Saxon immigrants, Viking raiders and Norman conquerors, Civil War battles and sieges, smugglers along its coastline and highwaymen in its forests. This history has left its mark in people's memories and on the landscape.

As a life-long photographer of people and places, the landscapes especially have been my interest. Twisted trees and eerily empty expanses of marsh harbour their own attraction. Could that unnerving cry just be seabirds – or something more sinister in half-light or mist? Is it really so hard to imagine witches riding across such a sky, on such a day?

Today, with the aid of Photoshop, we can add something extra to images that may suggest a dash of danger or pinch of mystery to stir up the imagination. Set your photo in a time period, mix scene and story into the cauldron: now, that's an interesting formula to me!

Source © The History Press. Used with permission

---

---

---

---

---





**Task 3: Spend 10 minutes on this task. Total 12 marks.**

In this part of the article, the writer is thinking about the reasons why certain places can make us feel scared.

**Read the text below. In your own words, write down two reasons the writer gives to explain why we feel scared: one reason from each paragraph. For each reason present two pieces of supporting evidence from the text.**

We tend to be nervous of dark places like forests – which are still all around us. So, you walk in an ancient wood where some of the weathered and twisted trees have grown into odd shapes. Often, with a little imagination, those trees can seem to have faces, distorted like grotesque or misshapen animals or humans. Would these be as frightening if seen at the right angle and in the right light?

Sometimes we like to be scared by storytellers, or their modern-day equivalent: television and films. Most of Grimms’ fairy tales are positively frightening. Embedded deep within our awareness is that prickly feeling of something outside of our control, waiting patiently in a particular spot. Is it surprising then that we fear someone – or something – in that uncertain grey distance... something unearthly, something waiting?

Source: © The History Press. Used with permission

**(a) First reason:**

---

---

---

---

---

---

---

---

[4]





**(b)** Two pieces of supporting evidence:

---

---

---

---

---

---

---

---

---

---

[2]

**(c)** Second reason:

---

---

---

---

---

---

---

---

---

---

[4]

**(d)** Two pieces of supporting evidence:

---

---

---

---

---

---

---

---

---

---

[2]

**[Turn over**



## Reading Media Texts

**Tasks 4 and 5** are based on a book cover of the novel “Listen to the Moon” by Michael Morpurgo.

**Task 4:** Spend **17 minutes** on this task. Total **20 marks**.

**Read the text below. Explain how language has been used to develop a sense that this book would be exciting to read. Present evidence to support your comments.**

May, 1915. Alfie and his fisherman father discover a girl on an uninhabited island off the coast of Cornwall – injured, thirsty, lost...and with absolutely no memory of who she is, or how she came to be there. She can say only one word: Lucy. Where has she come from? Is she a mermaid, the victim of a German U-boat, or even – as some suggest – a German spy? Only one thing is for sure: she loves music and moonlight, and it is when she listens to the gramophone that the glimmers of the girl she once was begin to appear.

However, World War One is raging; suspicion and fear are growing and Alfie and Lucy are increasingly under threat.

This is a major new novel from the author of PRIVATE PEACEFUL. It is a beautiful masterpiece of family, love, war and forgiveness in which what was once lost may sometimes be found, washed up again on the shore...

*Source: Reprinted by permission of HarperCollins Publishers Ltd © 2015 Michael Morpurgo*

---

---

---

---

---

---

---

---

---

---

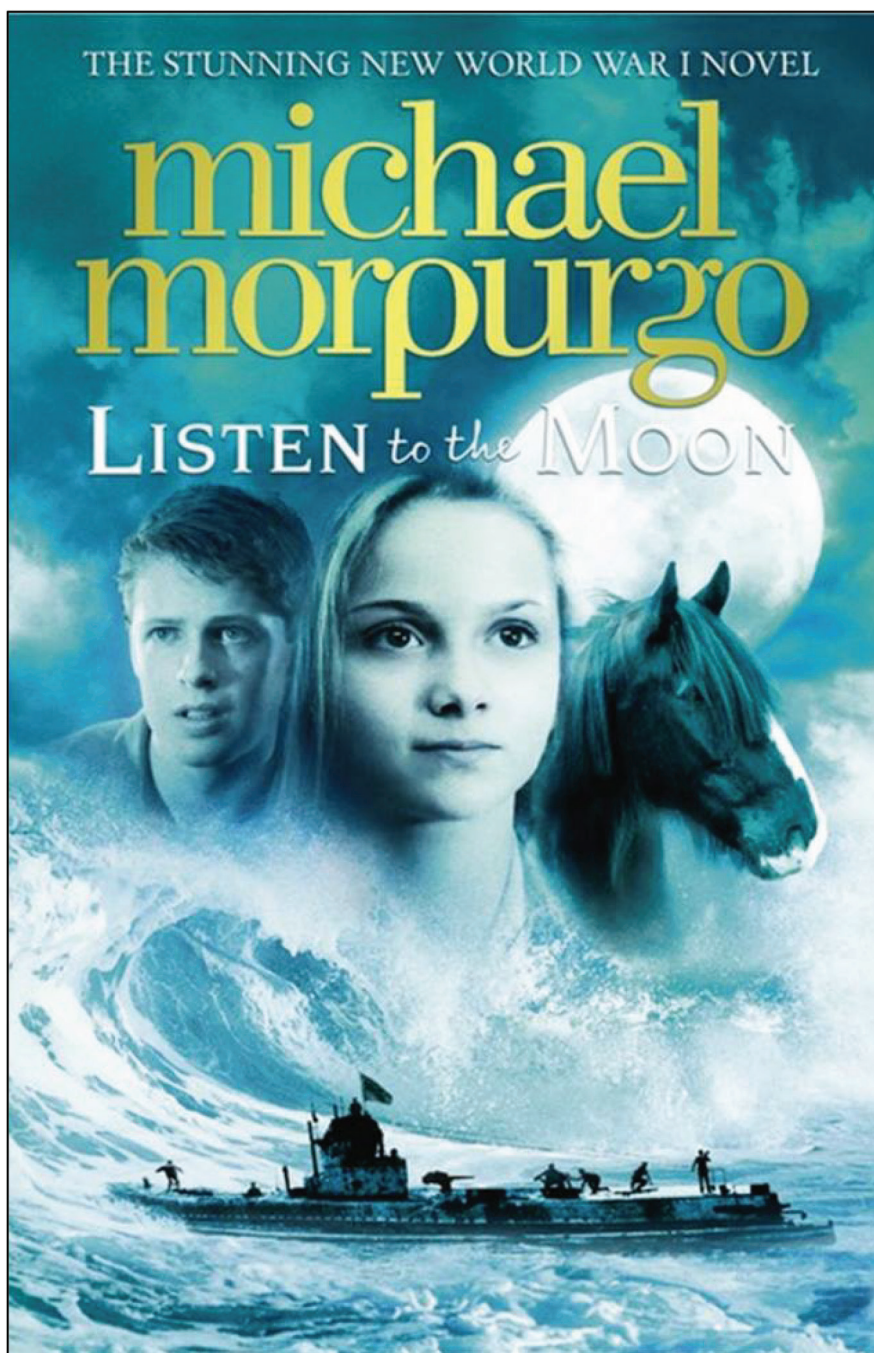




**Task 5:** Spend **8 minutes** on your response. Total **10 marks**.

Study the front cover of the book “Listen to the Moon” below.

Select two examples of presentational features from this front cover. Explain how these two presentational features make this book appealing to the reader.



Source: Reprinted by permission of HarperCollins Publishers Ltd © 2015 Michael Morpurgo

12529



\*16GEN1112\*



**(a)** First example of a presentational feature:

\_\_\_\_\_ [1]

**(b)** Intended effect on the reader:

\_\_\_\_\_  
\_\_\_\_\_  
\_\_\_\_\_  
\_\_\_\_\_  
\_\_\_\_\_  
\_\_\_\_\_  
\_\_\_\_\_  
\_\_\_\_\_  
\_\_\_\_\_ [4]

**(c)** Second example of a presentational feature:

\_\_\_\_\_ [1]

**(d)** Intended effect on the reader:

\_\_\_\_\_  
\_\_\_\_\_  
\_\_\_\_\_  
\_\_\_\_\_  
\_\_\_\_\_  
\_\_\_\_\_  
\_\_\_\_\_  
\_\_\_\_\_ [4]



---

**THIS IS THE END OF THE QUESTION PAPER**

---

**BLANK PAGE**

**DO NOT WRITE ON THIS PAGE**

12529



\*16GEN1114\*





**BLANK PAGE**  
**DO NOT WRITE ON THIS PAGE**

12529



\*16GEN1115\*

**DO NOT WRITE ON THIS PAGE**

<b>For Examiner's use only</b>	
<b>Section</b>	<b>Marks</b>
A	
B	
<b>Total Marks</b>	

**Examiner Number**

Permission to reproduce all copyright material has been applied for.  
In some cases, efforts to contact copyright holders may have been unsuccessful and CCEA  
will be happy to rectify any omissions of acknowledgement in future if notified.

250285



\*16GEN1116\*